



**Suman**

PROFESSIONAL ADVERTISING PARASOLS



Suman Ltd. Gračanica was founded in 1992. Since our beginnings we are continuously investing in knowledge and training of employees, production plants and market growth. Company's mission is to offer sun protection products, produced according to the latest technologies and best quality. We constantly strive to improve our production process using modern technologies and selecting young, enthusiastic and creative employees.

Thus today, Suman has become a company with recognized name with more than 20000 m<sup>2</sup> production space and over 100 employees with wide range of products and respectable list of clients. Production plants are located in Gračanica, Bosnia and Herzegovina with production capacity of 350-400 parasols per day. We sell our products via our sales branch - located in Sarajevo and via our network of agents covering territory of entire B&H. We sell our products in Croatia via our sister-company located in Zagreb and its branch network. Motivated by satisfaction of our customers we retain our place as an indispensable partner offering sun protection products.

Suman Ltd. is export oriented company. More than 65% of our products are being exported to the following countries: Germany, Netherlands, France, Israel, Lithuania, Slovenia, Serbia, Macedonia and Montenegro.

We provide

- permanent coverage of services in BiH and Croatia
- guarantee period for products
- maintenance and service
- possibility of changing the old and worn-out fabric on parasols.
- flexibility of delivery
- short and fast delivery

Our strengths are more than 20 years of experience and continuous investments in new products and human resources as well. Therefore, we have TUV certificate ISO 9001: 2008, as a reward for the quality of the effort.



**Suman**

THE MOST COMFORTABLE  
PLACE UNDER THE SUN



PRODUCT  
MADE IN EUROPE 

## About

Productivity and price used to be crucial for the success of a company. Today a modern company requires an extra ability to innovate, uniqueness, ability to learn and flexible adaptioning on the changeable market conditions and customer needs and of course in high quality. We support these enormous requirements with a systematic quality management-system called: TÜV ISO 9001:2008. Company's mission is to offer sun protection products, produced according to the latest technologies and best quality. We are constantly improving our production process using modern technologies and selecting young, enthusiastic and creative employees.

Our products contain 80% of materials produced in Europe.



## Quality features



HIGH QUALITY

All of our parasol elements from Alu Profi and Magnum series are made from high-quality aluminium alloy and special high-tech plastics.



ALL-WOOD  
IMITATION

All aluminium parts are by standard powder coated in white. Wood imitation and other colours are also available according to client request.



100%  
POLYESTER

Parasol cover is 160 – 300 g/m<sup>2</sup> 100% polyester fabric. As a standard we offer basic unicolor fabric, with professional screen and digital printing options with highest UV protection and colour durability index.



WATER  
REPELLENT

All fabrics on Alu Profi and Magnum models are 100% water repellent and water resistant.



EASY REPAIR

Click system that our engineers have carefully designed, at the same time thinking about a possible service parasols, allows a very easy service of the parasol on the site. You can find more informations about spare parts and repair instructions on our web site.



FIBERGLASS RIBS

Special frame reinforcement are fiberglass poles on roof structure instead of standard aluminium, which provide much stronger frame and breaking resistance.

## Screen printing



We can basically deliver every possible colour option from the Pantone colour scale. Even at an amount of 10 „Alu- Profi“ and 50 „Beach“ parasol models. There is no need to do compromises with the existing colours. We mix your colours individually for you!

The print for itself will be processed in the screen printing technique. This is also possible for high definition motives or in small quantities.

Screen is made of a piece of a fine mesh stretched over a frame. Before printing occurs, the frame and screen must undergo the pre-press process, in which an emulsion is 'scooped' across the mesh and the 'exposure unit' burns away the unnecessary emulsion leaving behind a clean area in the mesh with the identical shape as the desired image.

The printing forms will be tied up afterwards in a printing machine on the material. In the printing procedure the colour will be pressed onto the material with a squeegee through the opened screen places. When the simple colours are applied, the printing material goes through a drying tunnel.

The parasols printing process needs complex activities and facilitates preparation. This is the reason why this procedure counts from one print to 10 – Counts from 1 to 10 print runs of "Alu – Profi" and 50 print runs of "Beach" models. Screen printers use halftones to render shades (or tones) of colour with just one ink colour (using black ink to create grey tones, for example), which results in the gradient effect. Therefore are used the basic colours Cyan, Magenta, Yellow and Black (CMYK), which are printed over the top of each other. This is why the printing motive has to be colour separated before, dismantled in four basic colours.



## Digital printing



Suman

We describe digital printing as a printing process which directly sends the motiv from the computer to the printer, similar to an ink-jet printer. So there is no need for a hard copy form where the motives come on.

According to the screen printing this reason saves the costly preparation activities and facilities. This way every curve can be printed differently with less effort. An individual promotional print is available with a digital process already from one screen. Digital printing uses the same basic colours: Cyan, Magenta, Yellow and Black (CMYK), like the half-tone printing.





# EOS

Professional advertising parasols  
model with CLASSIC  
opening system



## VERY GOOD SOLUTION FOR ALL YOUR ADVERTISING PARASOL NEEDS

With two options of opening system, very easy opening by rope and pulley or with handle. Frame is made from 100% non-recycled very strong and durable aluminium alloy, basic colour is white (RAL 9016) and wood imitation, all other colours are available according to client request.

Joints and other plastic parts are made from very strong and durable ABS and polyamide, UV stabile. Parasol fabric is 160 – 300 g/m<sup>2</sup> 100% polyester fabric. As a standard we offer basic unicolor fabric, with professional screen and digital printing options with highest UV protection and colour durability index.



High Quality



100% ALUMINIUM  
frame



100% POLYESTER  
160-300 g/m<sup>2</sup>



Digital print



Screen print



Water  
proof



Water  
repellent



Easy repair



Wood  
imitation



FRAME RAL  
colors



Strongfixed  
model



FIBREGLASS RIBS



Air vent



Double top



UV protection

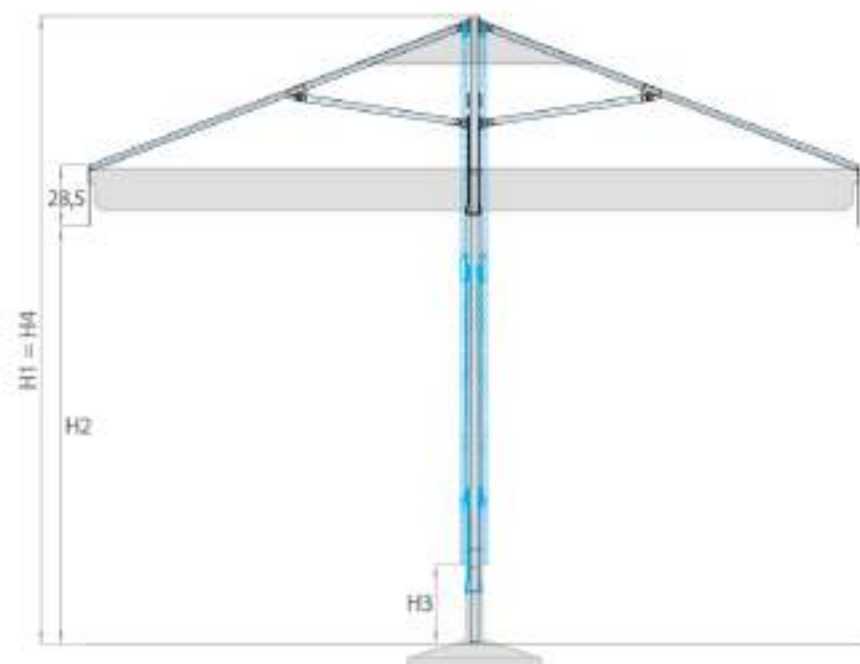


Get the installation



Europe  
production 100%

Suman



|  | MODEL          | H1<br>cm | H2<br>cm | H3<br>cm | H4<br>cm |
|--|----------------|----------|----------|----------|----------|
|  | LS200 CS I CR  | 248      | 190      | 109      | 248      |
|  | LS250 CS I CR  | 260      | 190      | 79       | 260      |
|  | LS300 CS I CR  | 275      | 190      | 50       | 275      |
|  | LS350 CS I CR  | 290      | 190      | 38       | 290      |
|  | LS400 CS I CR  | 320      | 212      | 297      | 320      |
|  | LO200 CS I CR  | 248      | 190      | 153      | 248      |
|  | LO250 CS I CR  | 260      | 190      | 137      | 260      |
|  | LO300 CS I CR  | 275      | 194      | 123      | 275      |
|  | LO350 CS I CR  | 290      | 196      | 120      | 290      |
|  | LO400 CS I CR  | 290      | 191      | 95       | 290      |
|  | LR3022 CS I CR | 275      | 196      | 86       | 275      |
|  | LR3526 CS I CR | 275      | 188      | 54       | 275      |
|  | LR4030 CS I CR | 290      | 205      | 46       | 290      |

If the parasol is with double roof (XL) then height H1 and H4 and length of closed parasol is + 10 cm  
All rectangular parasols (LR) have main pole Ø 50 mm





# ADVANCE

Professional advertising parasols  
model with TELESCOPIC  
opening system



## THE BEST SOLUTION FOR ALL YOUR ADVERTISING PARASOL NEEDS

Extremely easy opening with handle. With use of telescopic system (additional inner tube) parasol is opened and closed above table and chair height, which enables much easier and more comfortable parasols use on terraces. Beside very easy opening and closing, parasols has 3 heads, main ribs are connected to central pole on 3 points which gives a much greater strength and resistance of parasols, comparing to other solutions. Frame is made from 100% non-recycled very strong and durable aluminium alloy, basic colour is white (RAL 9016) and wood imitation, all other colours are available according to client request. Joints and other plastic parts are made from very strong and durable ABS and polyamide, UV stabile. Parasol fabric is 160 – 300 g/m<sup>2</sup> 100% polyester fabric. As a standard we offer basic unicolor fabric, with professional screen and digital printing options with highest UV protection and colour durability index.



High Quality



100% ALUMINIUM  
frame



100% POLYESTER  
205-160 gsm



Digital print



Screen print



Water  
proof



Water  
repellent



Easy repair



All-wood  
imitation



FRAME 54L  
colors



Strengthened  
model



FIBREGLASS RIBS



Air vent



Double top



Telescope  
model



UV protection



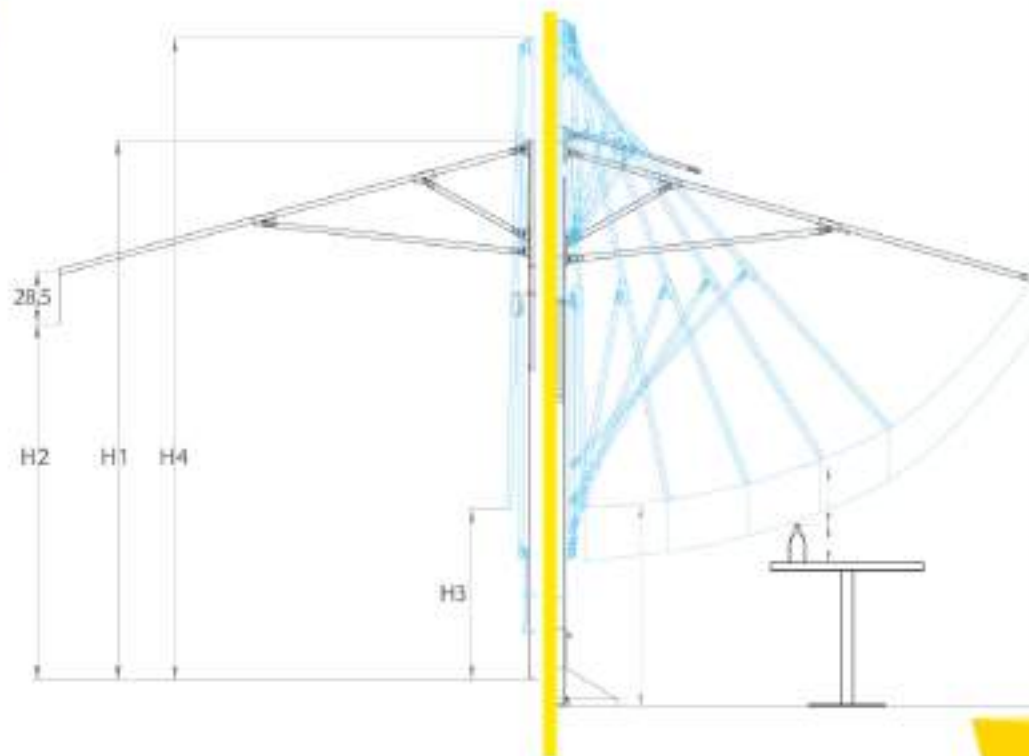
Gutter installation



Europe  
production 100%

Suman





|   | MODEL     | H1<br>cm | H2<br>cm | H3<br>cm | H4<br>cm |
|---|-----------|----------|----------|----------|----------|
|     | LS300 T3  | 272      | 190      | 92       | 324      |
|   | LS350 T3  | 293      | 192      | 105      | 360      |
|   | LS400 T3  | 297      | 191      | 129      | 418      |
|   | LO300 T3  | 275      | 190      | 140      | 296      |
|   | LO350 T3  | 282      | 190      | 149      | 320      |
|   | LO400 T3  | 293      | 193      | 136      | 331      |
|   | LO500 T3  | 320      | 200      | 118      | 368      |
|   | LR3023 T3 | 270      | 191      | 119      | 308      |
|   | LR3526 T3 | 279      | 192      | 100      | 321      |
|   | LR4030 T3 | 293      | 197      | 102      | 356      |

If the parasol is with double roof (XL) then height H1 and H4 and length of closed parasol is + 10 cm  
All rectangular parasols (LR) have main pole Ø 50 mm



# COBRA

Permanent solution

VERSATILE, COMFORTABLE,  
DURABLE PARASOLS



Cantilever parasol, very strong and resistant frame, main mast is made from steel tube and roof structure of parasols is made of aluminum, comes as a standard with polyester and acrylic fabric. Very easy to open with handle. A large number of options in terms of number of parasols on a main mast, and dimensions. Basic models are Single, Twins, or Quadruplets. Three solutions for parasol base, with a standard metal frame with concrete blocks, with inground base, or metal base for concrete pots for flowers.



High Quality



Aluminium  
and steel frame



100 %  
POLYESTER  
300 g/m<sup>2</sup>



100 % ACRYL  
360 g/m<sup>2</sup>



Digital print



Screen print



Water  
proof



Water  
repellent



Easy repair



Al-wood  
imitation



FRAME RAL  
colors



Strengthened  
model



FIBERGLASS RIBS



Air vent



UV protection



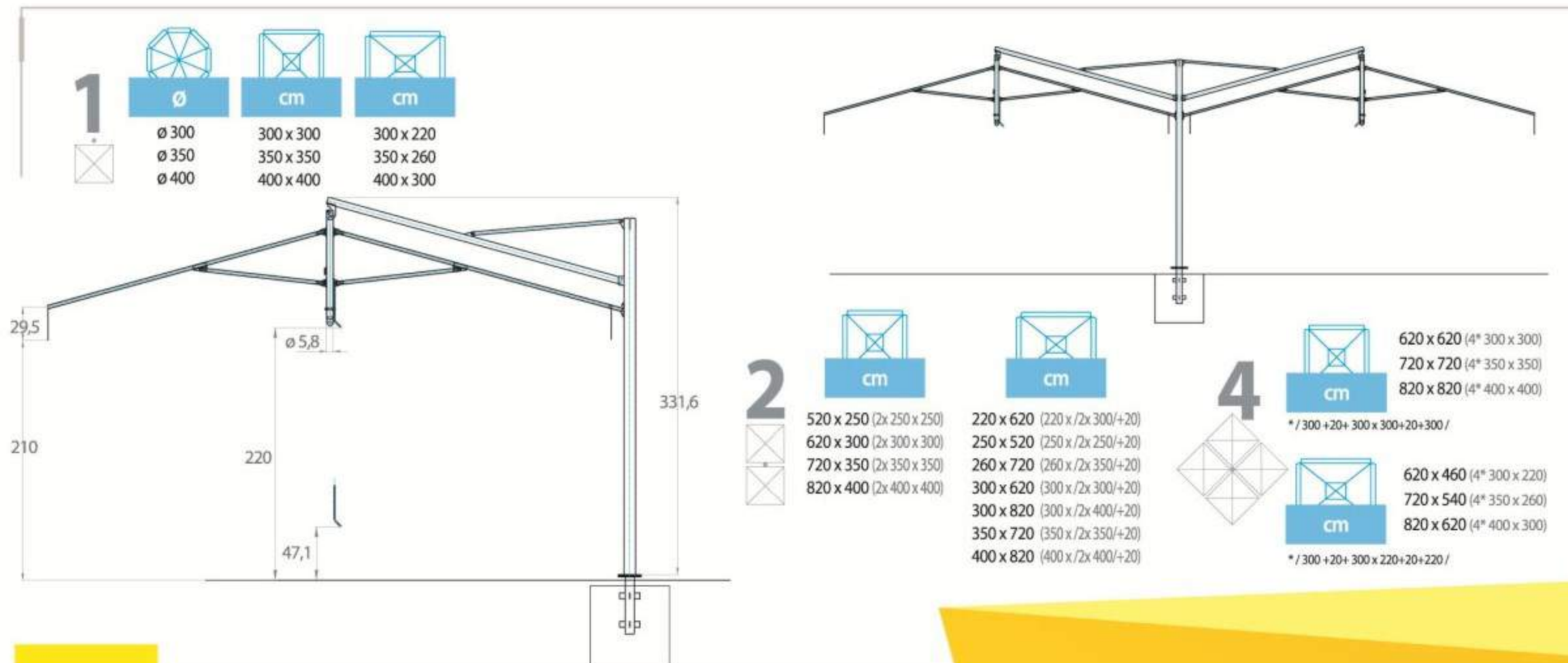
Gutter installation



Europe  
production 100%

Suman





# COBRA LIGHT

very easy to use

BEST FOR HOME  
PLEASANT TERRACE SHADE



Centilever parasol, very light but strong frame, main pole and roof parasol structure are made of aluminum comes as a standard with polyester and acrylic fabric. Very easy to open with handle.

**Suman**



High Quality



Aluminum  
and steel frame



100%  
POLYESTER  
200-300 g/m²



100% ACRYL  
200-300 g/m²



Digital print



Screw print



Water  
proof



Water  
repellent



Easy repair



All-wood  
imitation



FRAME RAL  
color



Strengthened  
model



FIBERGLASS RIBS



UV protection

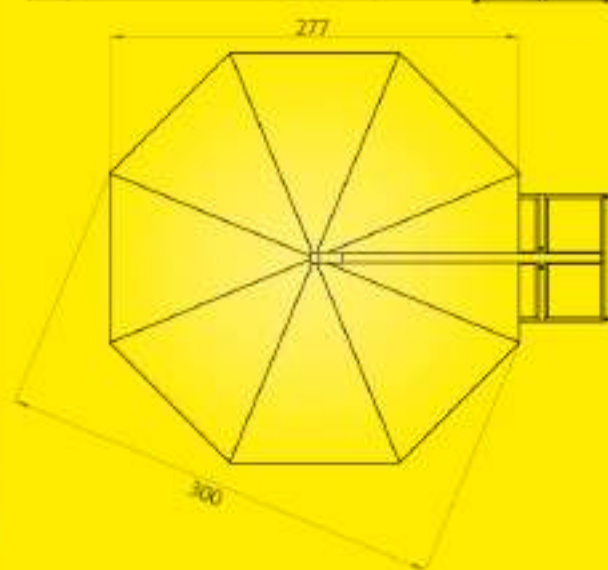
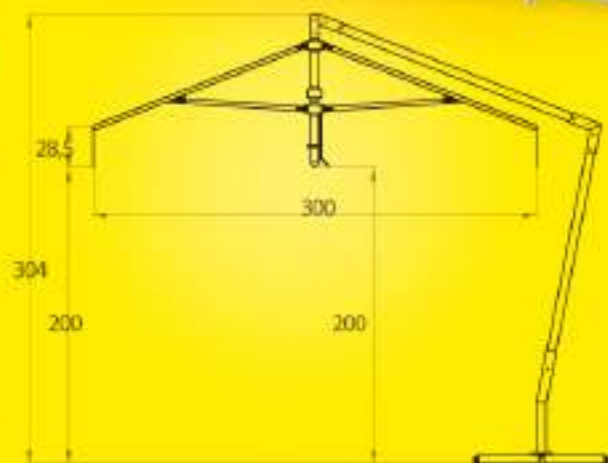


UV protection



Europe  
production 100%





#### MODEL SQUARE

cm



300 x 300  
350 x 350  
400 x 400

#### MODEL OCTAGON

Ø



Ø 300  
Ø 350  
Ø 400



# MAGNUM

strong and long-lasting parasols

ONE PARASOL FOR ONE  
TERRACE FOR WHOLE YEAR



Parasols Magnum are developed for professional advertising purpose. Due to its very strong, durable and heavy frame it is not intended for mobile use but for stationary use in high-end cafe, restaurant and hotels.

Frame model is telescopic with very easy manual opening/closing system with handle. Frame is made from 100% non recycled very strong and durable aluminium alloy, main mast is 78/3 mm, diagonal ribs are 20x50/1,5 mm, while middle and supporting ribs are made from reinforced pole 30x20 mm.

Main colour of frame is white (RAL 9016), with option for all other colours according to client request as a special demand. Parasol fabric is 100% polyester, 300 g/m<sup>2</sup>, waterproof and water-repellent as a standard, in few basic standard colours, and also high-end very strong and durable acrylic fabric in few standard colours.



High Quality



Aluminium  
and steel frame



100%  
POLYESTER  
300 g/m<sup>2</sup>



100% ACRYL  
300 g/m<sup>2</sup>



Digital print



Screen print



Water proof



Water repellent



FRAME RAL  
colour



Strengthened  
model



FIBERGLASS RIBS



UV vent



Telescope  
model



UV protection



Lightening option



Heating option



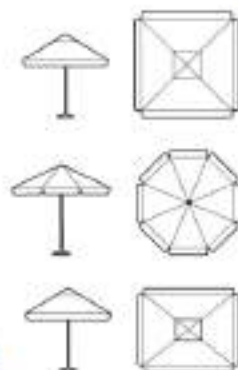
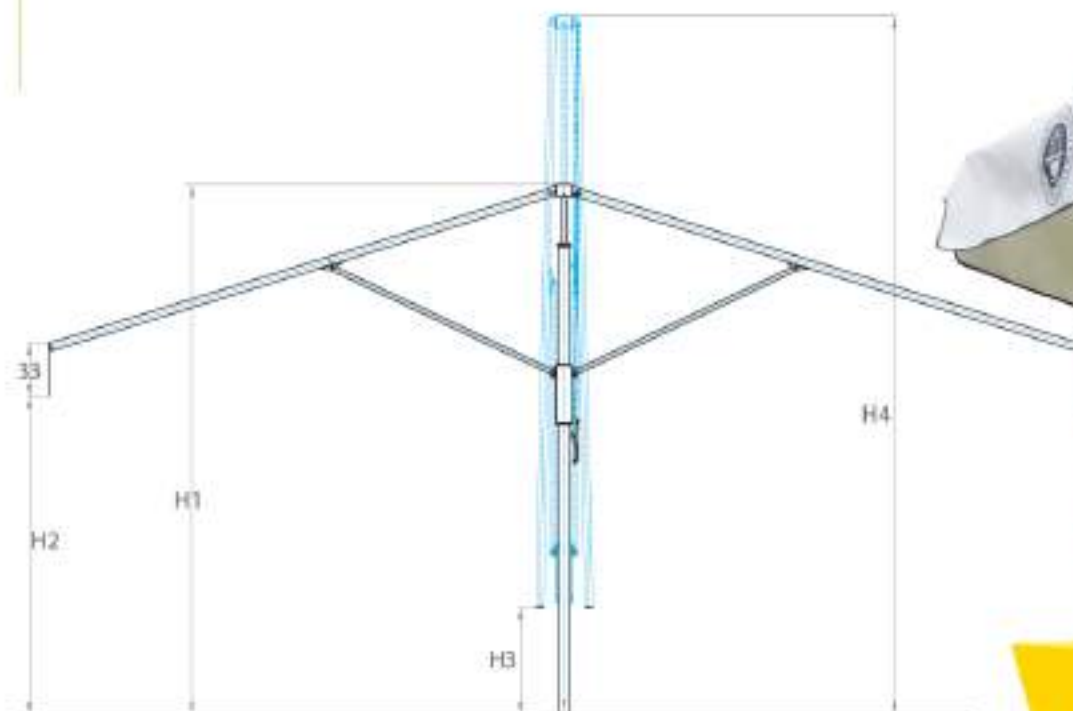
Better insulation



Europe  
product 100%

Suman





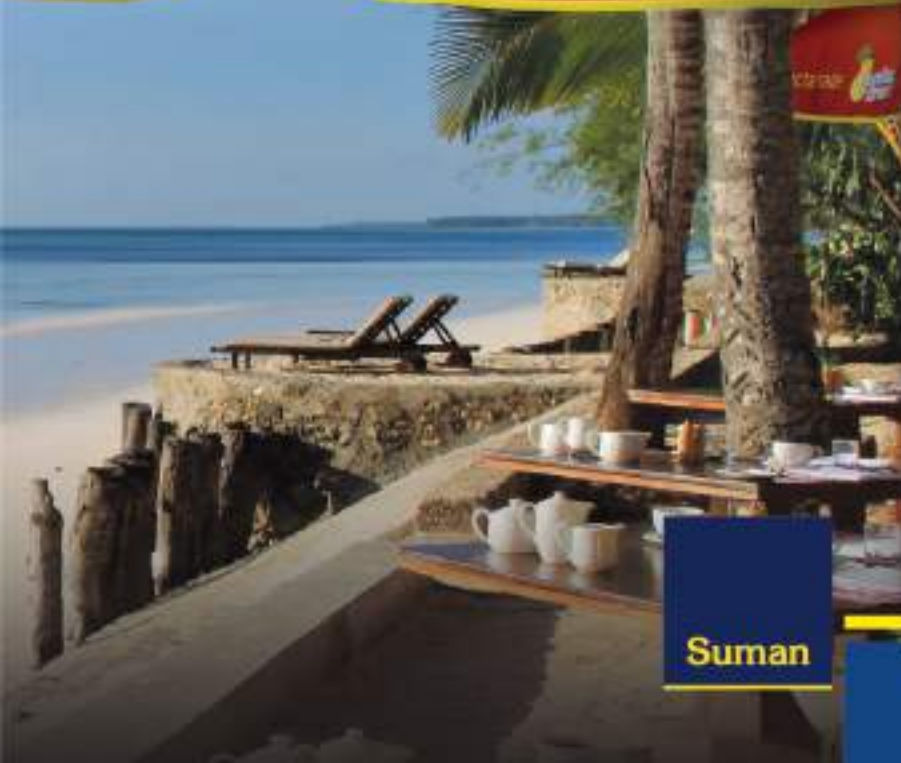
| MODEL   | H1<br>cm | H2<br>cm | H3<br>cm | H4<br>cm |
|---------|----------|----------|----------|----------|
| XL5350  | 310      | 210      | 133      | 383      |
| XL5400  | 310      | 198      | 121      | 413      |
| XL5500  | 326      | 197      | 66       | 433      |
| XL5600  | 346      | 195      | 29       | 471      |
| XLO400  | 310      | 199      | 171      | 384      |
| XLO500  | 330      | 199      | 138      | 404      |
| XLO600  | 351      | 197      | 158      | 478      |
| XLR5840 | 329      | 222      | 75       | 435      |
| XLR6041 | 329      | 219      | 60       | 435      |
| XLR6050 | 329      | 199      | 32       | 435      |



# BEACH MODEL

low cost

VERY EFFECTIVE AND  
MOBILE SOLUTION FOR  
ADVERTISING AND SHADE



Small wire advertising parasol, offering by far the cheapest solution for advertisement of your Company.

Frame is made from steel, main mast is two-part pole 22/25 mm, and ribs 3,8 mm. Very easy opening system with handle and click system. Parasol fabric is made from 160 g/m<sup>2</sup> polyester fabric, which is water-repellent as a standard.

**Suman**



High Quality



100% STEEL  
frame



100% POLYESTER  
fabric



Digital print



Screen print



Water  
repellent



FRAXIS BAL  
color



FIBERGLASS FIBRE



UV protection



Europe  
production 100%





#### MODEL ROUND

Ø



|       |       |
|-------|-------|
| BO180 | ø 180 |
| BO200 | ø 200 |
| BO220 | ø 220 |

#### MODEL SQUARE

Ø



|       |       |
|-------|-------|
| BS180 | ø 180 |
| BS200 | ø 200 |
| BS220 | ø 220 |



EUROPE  
production 100%





AND MANY MORE ...  
**Over 70 parasol models**

A blue business card for Suman Ltd. is shown at an angle, overlapping another card. The card features the company name 'Suman' in yellow, followed by the company details in white text. The background of the entire image is a dark blue gradient with a faint white line drawing of a building's structural frame.

**Suman**

**Suman Ltd.**  
Branilaca grada bb  
75320 Gračanica  
Bosnia & Herzegovina  
p: +387 35 704 940  
f: +387 35 708 302

info@suman.ba  
[www.suman.ba](http://www.suman.ba)